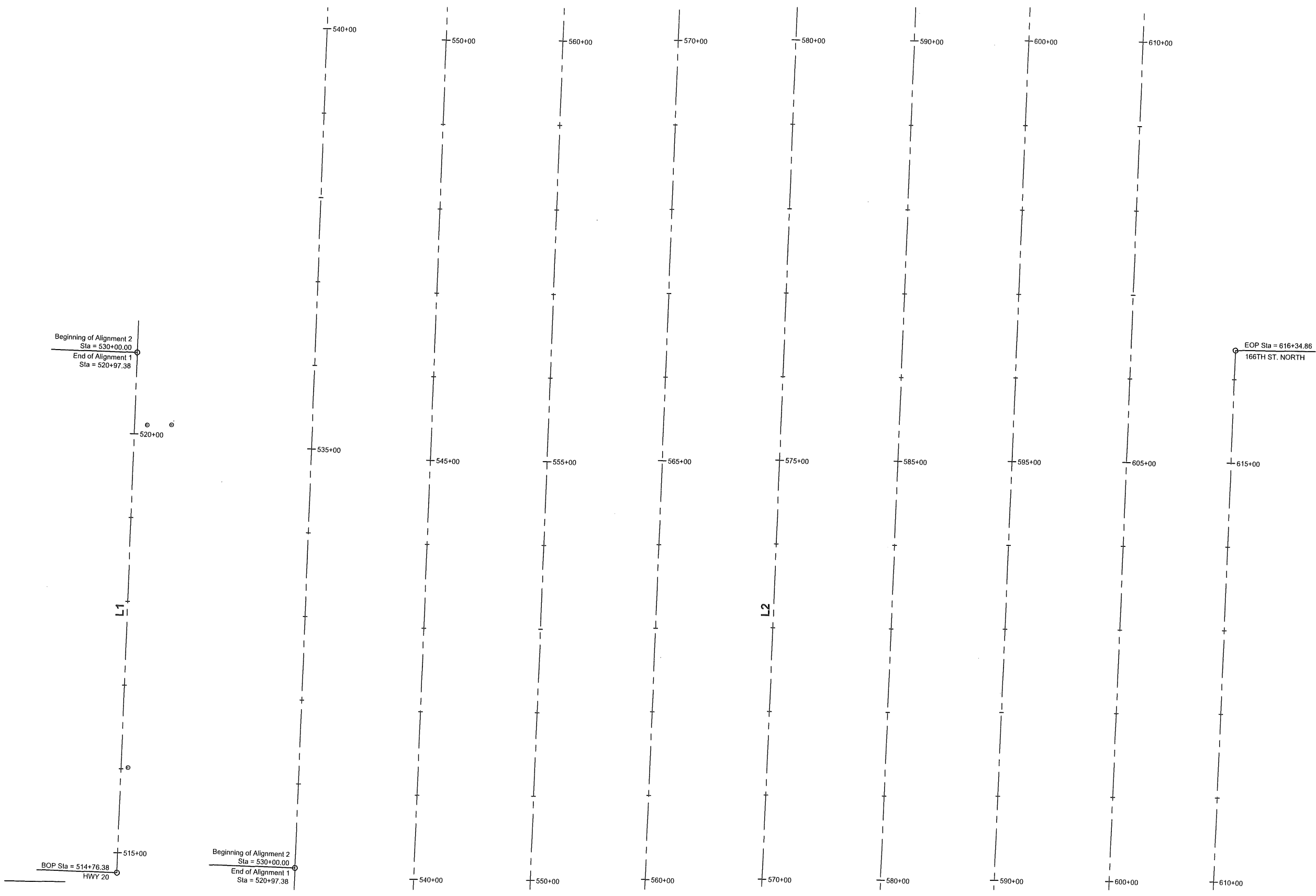


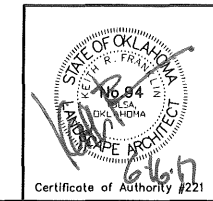
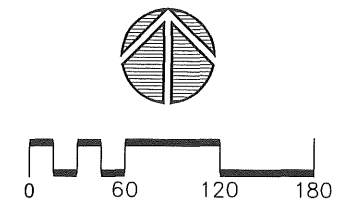
OKLAHOMA DEPARTMENT OF TRANSPORTATION					
FED. ROAD DIST. NO.	STATE	PROJ. NO.	FISCAL YEAR	SHEET NO.	TOTAL SHEETS
6	OKLA	28839(04) 32530(04)			
DESCRIPTION				REVISIONS	DATE



F:\681 Osage Prairie Trail Ext\Final\CAD BASE Files\Final\CAD BASE Files\RoadCalc\363\363-Base 3.dwg, 6/14/2017 4:46:17 PM

PI#	STATION	NORTHING	EASTING
BOP	514+76.38	504186.37	2555792.48
END OF ALIGNMENT 1	520+97.38	504806.93	2555815.69
BEGINNING OF ALIGNMENT 2	530+00.00	504806.93	2555815.69
EOP	616+34.86	513435.85	2556138.41

NUMBER	DIRECTION	DISTANCE
L1	N 02°08'31" E	620.9970 FT
L2	N 02°08'31" E	8634.9567 FT



Osage Prairie Trail Extension		
Design	JM	8/16
Drawn	JM/BB	8/16
Checked	JM/KF	6/17
Approved		
Squad	LPCI	

PREPARED BY:
LANDPLAN CONSULTANTS
1110 West 23rd Street TULSA, OK 74107 918-584-6464

GEOMETRIC LAYOUT PLAN

State Job No. 28839 (04), 32530 (04) Sheet No. 7 of 32